

Button Front Cardigan

from *Fibra Natura Book 5: Sensational Family Portraits*



UNIVERSAL YARN
WWW.UNIVERSALYARN.COM

Follow the chart between the lines that indicate the size you are knitting. If a line bi-sects a cable, work these sts as plain Stockinette.
On odd numbered rows (WS rows), read the chart from left to right.
On even numbered rows (RS rows), read the chart from right to left.

- Knit on RS, Purl on WS
- Purl on RS, Knit on WS

Slip 3 sts to cable needle, hold at front of work, K3, K3 from cable needle

Slip 3 sts to cable needle, hold at back of work, K3, K3 from cable needle

Slip 1 knitwise, K1, PSSO

Slip 1 knitwise, K2tog, PSSO

Knit 1 tbl (RS and WS rows)

Slip 1 knitwise (with yarn in back)

M1L: Pick up the running thread between the needles from front to back onto the left-hand needle and knit into the back of it

M1R: Pick up the running thread between the needles from front to back onto the left-hand needle and knit into the back of it.

Chart D: Sleeve

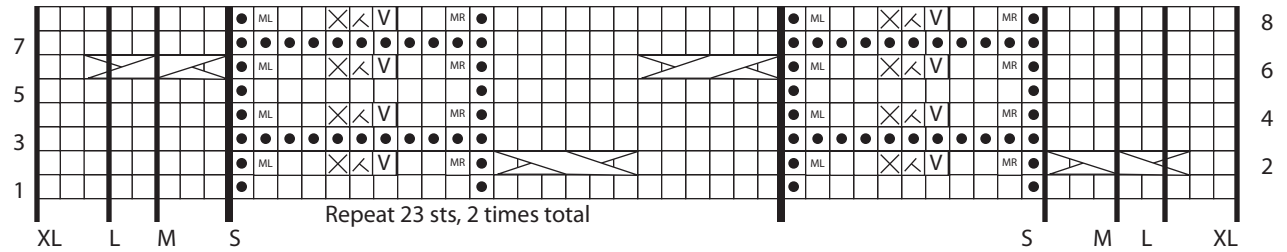


Chart C: Right Front

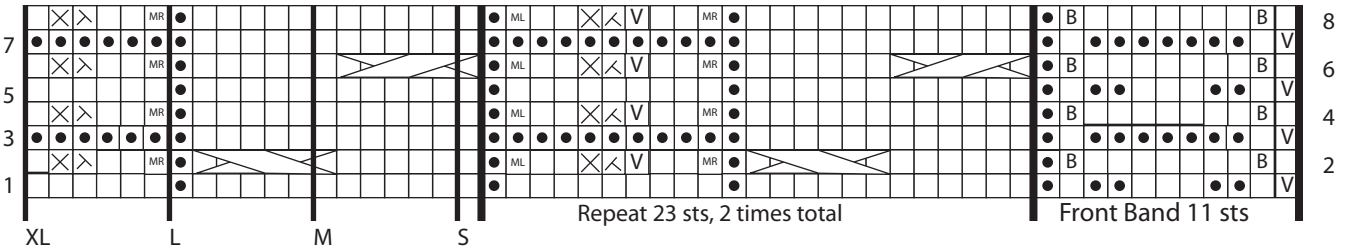


Chart B: Left Front

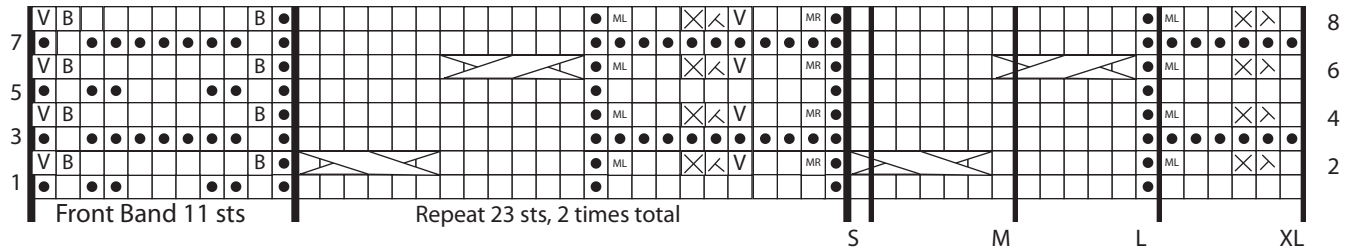


Chart A: Back

