

# Vested Interest Chart

from *Fibra Natura Book 5: Sensational Family Portraits*

Follow the chart between the lines that indicate the size you are knitting.  
 On odd numbered rows (WS rows), read the chart from left to right.  
 On even numbered rows (RS rows), read the chart from right to left.



UNIVERSAL YARN  
 WWW.UNIVERSALYARN.COM

- ☐ Knit on RS, Purl on WS

● Purl on RS, Knit on WS
- ⊠ RT: Right Twist: K2tog, leave sts on left hand needle, insert right hand needle between the same 2 sts and knit the first st again. Slip both sts off left hand needle

∇ Slip 1 knitwise (with yarn in back)

Chart C: Vest Right Front

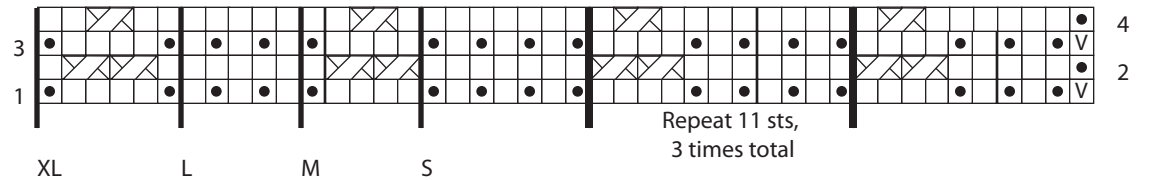


Chart B: Vest Left Front

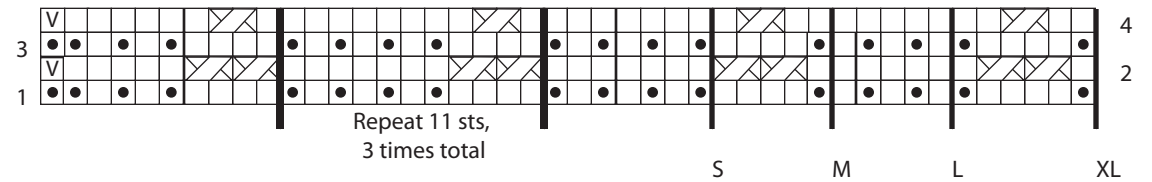


Chart A: Vest Back

